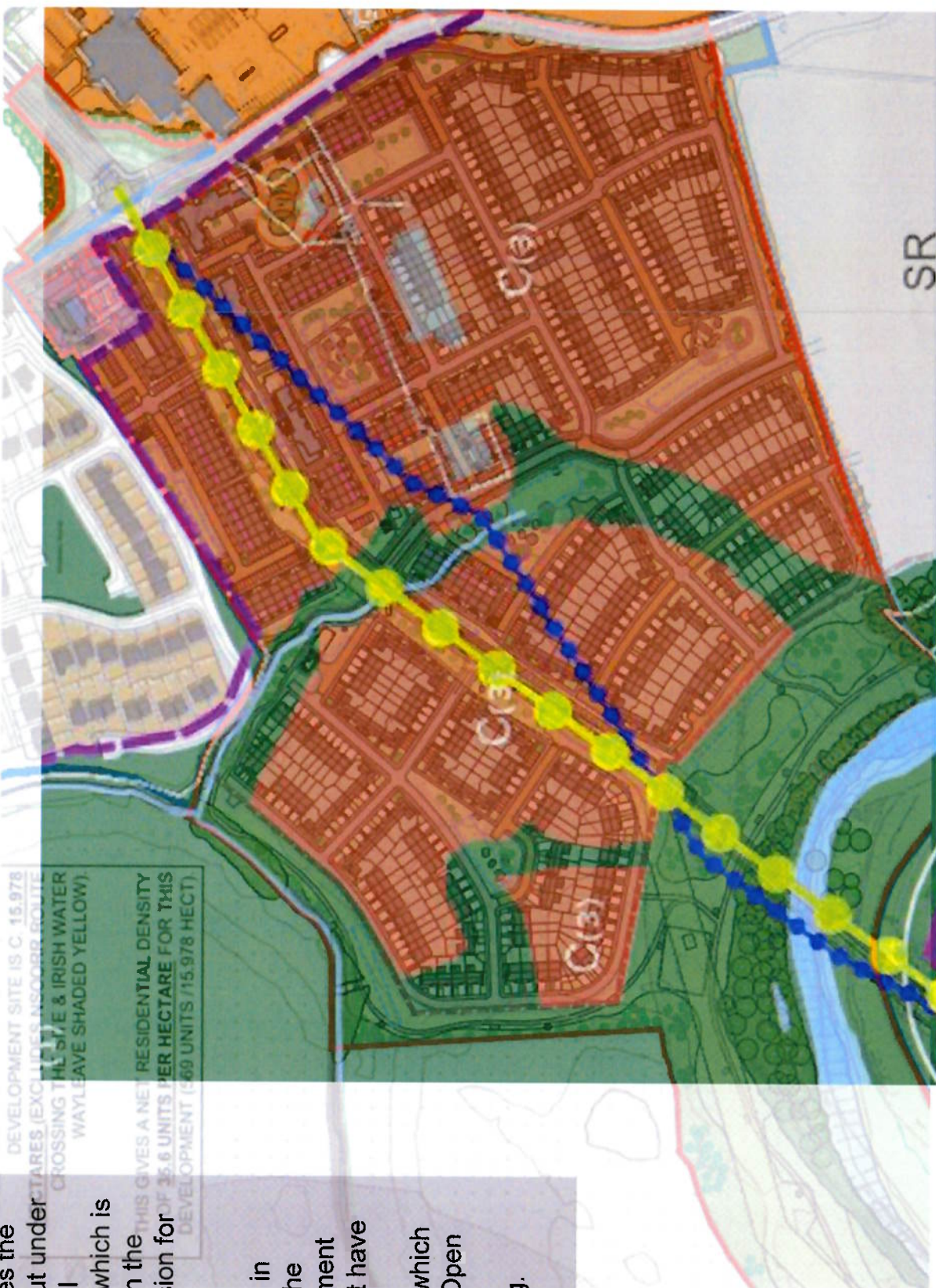


Overlay of applicant's site layout plan and Newbridge Settlement Plan Map Ref: V2-N:11.1

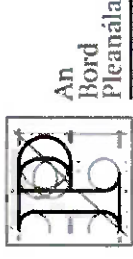
This map illustrates the revised road layout under Proposed Material Alteration No. 54 which is in accordance with the approved permission for the Road.

The zoned land is in accordance with the Newbridge Settlement Plan and does not have regard to Material Alteration No. 53 which seeks to replace Open Space lands with Residential zoning.

DEVELOPMENT SITE IS C 15.978
TAKES (EXCLUDING ACCESS ROUTE
CROSSING THE SITE & IRISH WATER
WAY LEAVE SHADED YELLOW).
THIS GIVES A NET RESIDENTIAL DENSITY
OF 36.6 UNITS PER HECTARE FOR THIS
DEVELOPMENT (569 UNITS / 15.978 HECT)



Overlay of applicant's site layout plan and Newbridge Settlement Plan Map Ref: V2-N:11.1



This map illustrates the original road layout and which does not align with approved permission for the Road.

The zoned land indicates the area of residential and open space zoning in accordance with Proposed Material Alteration No.53. It is clear that a significant number of houses/ parts of sites are located on lands zoned for open space use, though less than originally proposed prior to Material Alteration No. 53.